

Glen Park Primary School

Contact information:

Phone: 53345360

Web: <http://glenparkps.vic.edu.au/>

Also refer FACEBOOK

By T. Shaw principal 1997-2021

(Celebrating 25 years at Glen Park PS)



Glen Park Primary School
Providing quality state education since 1871
(150 years serving our community)

Glen Park Gazette

A big thank you to the staff of Glen Park Primary: Heather Angow , Ryan Ure, Kirrily Urquhart, Kari O'Gorman, Alison Middleton, and our supportive school community

Printed by Quickprint 53-59 Scott Parade Ballarat 53388458

COVID LOCKDOWNS AT GLEN PARK PS 2021

As we did last year, Glen Park provided 'learning packs' for individual students during lockdowns. These packs were all self-contained and included reading, writing, maths, and arts/humanities activities usually for 1-2 weeks. They would be collected by parents and changed over as required. Every pack had all the work, learning tools, books and consumables needed as well as detailed instructions for the learning material provided. In this way we replicated the learning we would be doing at school as close as possible, and it also minimised the amount of time children needed to spend online.

Students took home their iPads which were loaded up with all of the apps they needed as well as the books and videos they might require.

Some children were able to attend school (children of essential workers or children accessing our tutoring program) and learned much as

they would have done normally just with fewer students around.

Our open space and room to move both inside and in our school grounds has been a bonus during these times. We plan to enhance that by constructing a dedicated outdoor learning space which we plan to have in place early in 2022.

The only major disappointment this year has been that we have had to cancel our excursion program. Hopefully we can have a bigger and better one in 2022.

Our students seem to have adjusted well. They are real experts at off-site learning now. They were early in their uptake of mask wearing, long before it was mandatory. All our staff are fully immunised and everyone is looking forward to an under 12 vaccine hopefully in 2022. After 2 years of lockdowns we are all looking forward to a safe and busy year next year.

VACANCIES FOR 2022-23



Cubby building on the oval.

We gained a new family for 2021 and have a robust enrolment of eight in 2021 and the same in 2022 unless we get a new enrolment or two. We are looking forward to a big influx of preps in 2023. Students of all year levels are welcome but we are always keen to have preps start with us every year.

Our Zone is quite large, covering Coabbin and Hillview Estates and stretching out through Pootilla, Wattle Flat towards Dean and Creswick. We do accept children sometimes from outside our zone in special circumstances.

In 2022 we have big plans (if we are able to get back to 'normal'). New PCs, a dedicated outdoor learning space (with UV protection thanks to the DET shade sail grant), Lego robotics, and a new front fence. We will continue with LOTE, Tutoring and MARC Van next year and our free excursions and swimming/gym program. We are also looking forward to DETs new rural education Strategic Plan next year. Check us out online to see what we are up to. We post on Facebook, every day.

Glen Park is taking enrolments NOW for 2022 (we would also like to hear from those of you who are considering enrolling at Glen Park in 2022-23)



We expect the children who enrol at Glen Park to be enthusiastic, self-motivated learners who can take the first steps towards becoming life-long learners in an environment that rewards high expectations, imagination, creativity and hard work.

Halls Gap Zoo visit in term 3

Our school values are:

- ⇒ **ACHIEVING PERSONAL BEST**
- ⇒ **EMPATHY**
- ⇒ **INDIVIDUALITY & PERSISTENCE**

SOME OF WHAT WE CAN OFFER YOUR CHILD

- A better than one to one computer and iPad ratio. (all IT provided by the school) new PCs for 2022.
- Children are treated as individuals.
- Co-operation is valued over competition

Sadly we only squeezed in 3 swimming/gym sessions this year.



- We have an innovative literature based thinking curriculum using the F-10 Victorian Curriculum.
- Free swimming / Gym and excursion program

Contents of one of our off-site learning pack for grade 3.



- Experienced teaching staff (Special needs, LOTE and MARC van) .Children are learning Japanese in LOTE this year.

Children studying Japanese with Kiri.

- A **library second to none!** Our library includes novels, readers, big books, graphic novels, non-fiction, DVDs, software, teacher resources and a teen and parent library. We even have a popular Street Library!
- Children can borrow books at any time, read as many as they like and keep them to read as long as they need too. All of our students met their Premier's Reading Challenge goals for 2021.



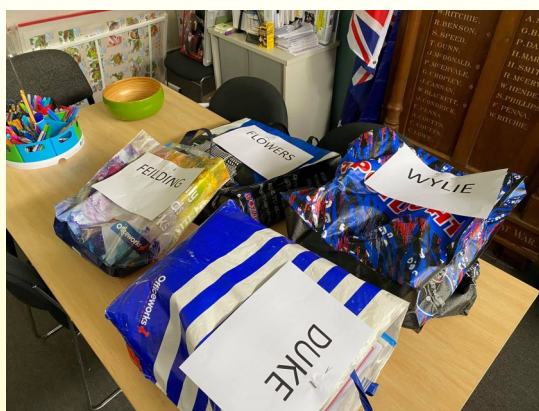
Children reading with Kari from the MARC Van



- Children are not sent outside in the freezing cold or the heat of summer, we will have cool, clean, well ventilated and inviting classrooms this summer. In 2022 we will have a dedicated outdoor learning space.
- Plenty of fresh open air and space to play and have fun. We have plenty of space in our clean, well-ordered, spacious classrooms and a big playground for all children to enjoy.

During COVID lockdowns (2020-21) we created individual learning packs for each student to take home (no WebEx calls and parents doing the 'heavy lifting'). They contained practical, enriching school work which closely mirrored what the children experience at school.

Below learning packs from our recent off-site learning experience ready to be picked up.



- Our small size enables **genuine one-to-one teaching opportunities**. We have 'learning discussions' not 'chalk and talk' one size fits all lessons.



- We also have authentic student to student mentoring.
- We don't charge fees or levies, have expensive uniforms or hold endless fund-raising efforts.
- Students are not forced to 'double-up' in other classes because their teacher is away.
- We have a relaxed bully-free learning environment
- Healthy rural environment only minutes from Brown Hill, Dean and Creswick.
- All student needs (even school bags) provided.
- No 'baby sitting' in front of the DVD.
- No 'busy work' or constantly lining up, marching around, running errands and definitely no doubling up classes etc.

Above student mentoring

Some photos of our beautiful rural surroundings

VISIT GLEN PARK FOR A TOUR OR CHECK OUT OUR WEB SITE or FACEBOOK PAGE

OLD POOTILLA PS

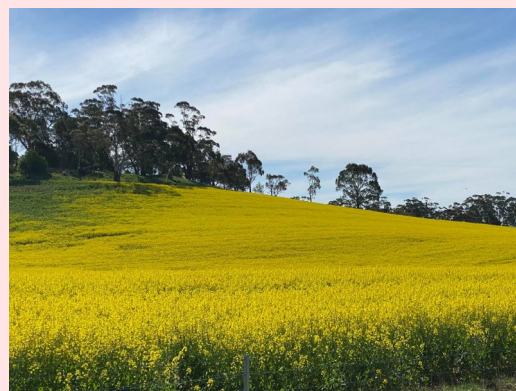
Pootilla School (also known as Fellmonger's Road School) was opened on 9th of October 1878, with Sam Trend as head teacher and Miss Cope as sewing mistress. The site recommended by D.I. Philp was Allotment 3, Section 5, Parish of Bungaree, County of Talbot and part of the water reserve.

It was stated as being an excellent school site, it being in such close proximity to a permanent spring water.



In 1878 a wooden portable building measuring 24 ft X 16 ft with attached quarters, of three rooms and roofed with iron. This was erected at a cost of eighty pounds. Unlike most schools of its size it had a gallery. In 1881 the school room was lengthened by 10 ft. at a cost of eighty pounds.

In 1879, the name Fellmonger's Road School was changed to Pootilla on the recommendation of the then District Inspector. Pootilla was the name of the post office. In 1880 the enrolment reached 83, mostly the children of timber workers and miners. The school closed on 27th March 1946.



COMMUNITY NEWS

Get informed and get vaccinated



[Find out more](#)

Authorised by the Victorian Government, Melbourne



White Swan Reservoir



Current capacity of the White Swan is 90% full. The Gong Gong is 100% full, Kirks 95% and LaLal is 100% as of 01/11/21

Brown Hill News



For all the news about what's going on in Brown Hill (Such as the Brown Hill Market re-starting up this year in the Brown Hill Hall) refer to the excellent Brown Hill Community news Hub: <https://www.brownhill.vic.au/news/2018/04/22/brown-hill-market-coming/> for more information.

EVERY DAY IS AN OPEN DAY AT GLEN PARK!



Don't put up with second or third best, don't just hope it will 'get better next year'. We offer so much and we are just a short distance out of town. Give us a call, or visit our website or Facebook page which is updated daily to see what we do. We are always happy to welcome new families to our school. We have been doing so since 1870!

Dean Hall and Mechanics Institute Inc.



looks set for another fantastic year of special events for their community. Hall membership is \$20 per family per year or \$50 for 3 years. If you are interested in membership or hall hire check them out on Facebook: <https://www.facebook.com/Dean-Hall-Mechanics-Institute-165496563471217/> The Brown Hill Public Hall is also available for hire (phone: 0455862379)



Ballarat East Neighbourhood House

For information about the fantastic range of services they offer go to their website: <https://ballarateastnh.org.au/> or contact phone 0422612052

Mt Prospect District Tennis Association Inc.

is well renowned for its well groomed sixteen grass tennis courts. It's located in the picturesque town of Creswick and is surrounded by the old Creswick Botanical Gardens. Ring James Maher if you are thinking of participating 0422607224

The Wattle Flat - Pootilla Landcare Group

is a committed community group aiming to enhance and protect biodiversity throughout the local area. The group formed in 2002 and now has nearly 100 individual members. Refer to their web page: <https://www.landcarevic.org.au/groups/corangamite/wattle-flat-pootilla/>



The Brown Hill Bulls

The Brown Hill Bulls Cricket Club is looking for players for the 2020-21 season (their home ground is behind the Brown Hill Pool), If you're interested (and this will be a great year to get involved) contact Phillip Knowles 0407399971.



It's also great to see lights and female friendly facilities built at Russel Square.