

Glen Park Primary School  
Providing quality state education since 1871  
(153 years serving our community)

EVERY  
SCHOOL  
EVERY  
CHILD

Glen Park Primary School

Contact information:

Phone: 53345360

Web:

<http://glenparkps.vic.edu.au/> Also refer  
to our FACEBOOK page.

By T. Shaw principal (1997-2025)



# Glen Park Gazette

*A big thank you to the staff of Glen Park Primary: Pauline Moody, Linda Duke, Chilanka Siriwardana, Kirrily Urquhart, Katie White, and our supportive school community*

Printed by Quickprint 53-59 Scott Parade Ballarat 53388458

## NEW STRATEGIC PLAN AT GLEN PARK

This year was our year of review. An external reviewer inspected our school over two days and helped guide us in developing a new Strategic Plan for 2024-28. Below are observations made after they held forums with parents and students:

*Parents were delighted that their children enjoyed going to school. Parents commented on the unique nature of the school whereby the Principal/teacher can devote so much one-on-one teaching time to each student.*

*All students participated in a forum with panel members on the final panel day. Students were positive about the school and the caring and supportive teacher(s). (Page 29 School Review Report)*

Our Goals going forward will be:

- Maximise the learning growth of every student.
- Develop the capacity of students to be active and engaged learners.
- This year also completed

This year we also completed work in our grounds which included replacing our front fence and access gate and creating a new front garden. **(refer photo below)** We still have some more work to complete in 2025 on our grounds as well as creating much needed additional storage. We will also improve our 'Shelter in Place' facilities.



## GLEN PARK IN 2024



**2024 has been another big year here at Glen Park Primary School.**

This year we continued our focus on science by inviting a real scientist (Heather) from Swinburne to visit for 3 special science days focusing on rocks/plants, robotics and forensics. They were so popular we will continue the program next year.

We went on an excursion to see Wicked in Melbourne and also a big excursion to Werribee Open Range Zoo. We also went on an excursion to the Ballarat Art Gallery for our second Aboriginal Arts experience.

Next year we will again be running a tutoring program as well as LOTE, Marc Van visits and Music/Arts therapy as well as our swimming/gym program.

Our library is even bigger than before—the best in Ballarat (Have you checked out our Street Library?) and our grounds are looking great (still more to do outside.) More fun excursions and engaging learning activities are planned for 2025. **(left, cubby building )**



## Bullarook PS No 39

Bullarook Primary School opened in 1859 with J. Ham as the teacher. The school was known locally as "Mr. Ham's School" and was initially located in a converted three-room house. Enrolment reached 58 students by November. The school served the farming community but never grew beyond a hamlet with a post office, school, and church. It officially closed in 1990.

### TIMELINE

#### 1859

The school opened in 1859. The teacher was J Ham.

#### 1861

J Ham was officially recognised as head teacher.

Enrolment reached 58 by November.

The school was known in the local area as Mr Ham's School. The building was converted from a three-room house to a single room. It was located on a two-acre site in the County of Grant.

#### 1863

In October, the school was moved by residents into the north-east corner of the site in the middle of the forest.

#### 1873

A fire destroyed the school and the parents of the 125 students petitioned for a new building. The building was erected later in the year.

The Wesleyan Church served as a school while the new building was constructed.

#### 1889

A new teacher's house of four rooms was built.

#### 1970

The name of the school changed from Bullarook Common School, to Bullarook Primary School in 1970.

#### 1989

The school closed. Bullarook is in the Glen Park Zone.

*Recent photo of the old school site Springbank Road, Bullarook.*



## FAIR SCHOOL FUNDING



A fair funding system for schools should provide levels of funding based on **student need**. Student poverty is the most critical variable affecting funding levels and can serve as a proxy for other measures of disadvantage, such as racial segregation, limited English proficiency, and student mobility . The ongoing failure to fairly resource and set meaningful reforms for our schools is a symptom of a broken national funding system (created by previous Federal Governments) Unless we address its foundational issues, Australian teachers and students — particularly those in disadvantaged and rural schools (predominantly state schools)— will continue to be short-changed.

The disparity in school funding can be clearly seen in Ballarat' secondary schools. Hopefully the Commonwealth's 'Better and Fairer' school's agreement can begin to address the significant funding short fall for state schools .

## WILDLIFE

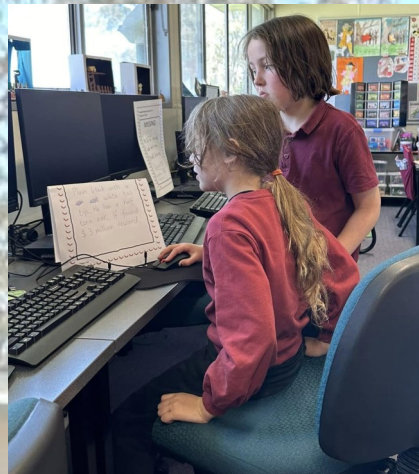
Be careful driving down Springs Road. Keep your eyes on the road (not on the goats, camels and alpacas) for kangaroos. The photo above was taken about 7:00 am on a weekday morning. (Also I had to stop for an echidna crossing Springs Road recently so watch out for them too)





## A small school on the edge of the city

Number 44



### Photos

- Children having a picnic lunch.
- Experiments in forensic science with Heather from Swinburne
- Working with Kirrily and busy reading and constructing.
- Visiting Perradak Arts. (wrapped in a possum skin cloak).
- We had a visit from an echidna .
- Peer tutoring on the computer.



## GLEN PARK STATE FOREST

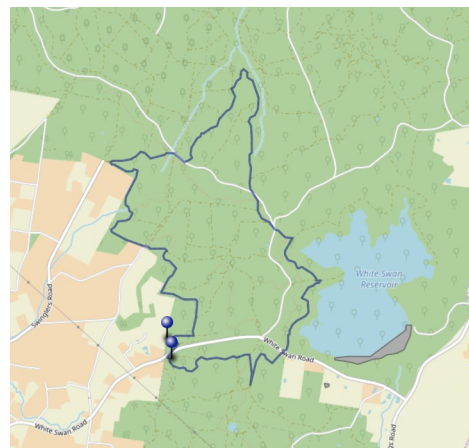
Glen Park State Forest (recently re-signposted) is part of the Goldfields track which can be walked as a circuit.

Walkers can park at the corner of Glen Park Rd and White Swan Rd and walk down White Swan Rd for approx. 200 metres to the Wallaby Track (Goldfields track), it is now well sign posted and well walked.



This walk takes you through the Nerrina Historic Reserve, this was a major gold mining area, where there are many deep shafts close to the track so be careful.

The trails are a mixture of narrow bush tracks and 4 wheel drive and trail bike tracks. You might also see metal detectors trying their hand at finding a nugget or 2 and the occasional burnt out car!



## COMMUNITY NEWS

### The Wattle Flat - Pootilla Landcare Group

is a committed community group aiming to enhance and protect biodiversity throughout the local area. The group formed in 2002. Contact Andrew 0419 091 601 or Stephanie 5334 8035 Refer to their web page: [leightcatchmentgroup.org/wattle-flat-pootilla](http://leightcatchmentgroup.org/wattle-flat-pootilla)



### The Brown Hill Bulls

The Brown Hill Bulls Cricket Club is looking for players for the 2020-21 season (their home ground is behind the old Brown Hill Pool site), If you're interested (and this will be a great year to get involved) contact them on 0438347670. Visit their Facebook page for more information and fixtures.



### White Swan Res.

Current capacity of the White Swan water supply is 6637 ML (about 50% capacity)



### Brown Hill News

For all the news about what's going on in Brown Hill



(Such as the Brown Hill Market re-starting up this year in the Brown Hill Hall)  
**Email:** [bhpa@brownhill.vic.au](mailto:bhpa@brownhill.vic.au)  
**Phone:** 5334 8014 (evenings only)  
**Post:** PO Box 1863, Bakery Hill 3354

**NOTE: The Glen Park Gazette will not be hand delivered to the Coorabin Estate in 2025 but you can still access it on our web site.**

### Dean Hall and Mechanics Institute Inc.



Hall hire contact : Ngaire Mckay 0417111485 or email [gmckay3@bigpond.com](mailto:gmckay3@bigpond.com)

### Mt Prospect District Tennis Association Inc.

is well renowned for its well groomed sixteen grass tennis courts. It's located in the picturesque town of Creswick and is surrounded by the old Creswick Botanical Gardens. Bridge Street, Park Lake Creswick Victoria 3363 contact them on 0422607224

