

Glen Park Primary School
Providing quality state education since 1871
(159 years serving our community)

Glen Park Primary School

Contact information:

Phone: 53345360

Web:

<http://glenparkps.vic.edu.au/> Also refer

FACEBOOK

By T. Shaw principal 1997-2020



Glen Park Gazette

A big thank you to the staff of Glen Park Primary: Heather Angow, Ryan Uren-Kirrily Urquhart, Kari O'Gorman, Alison Middleton, and our supportive school community

Printed by Quickprint 53-59 Scott Parade Ballarat 53388458

2020.....A CHALLENGING YEAR

Term One of this year ended very abruptly due to the rapid spread of the COVID 19 Pandemic. What was already a short term was reduced to 7 weeks when the children started their holidays a week early. DET was well organised and supported schools right from the start and for the duration of the crisis (Thanks to my SEIL, Paul Nolan for his assistance.) Sudden closure didn't mean of course that teachers started their holidays early. Most of us worked through our holidays knowing that we were unlikely to be returning to face to face teaching with our students and colleagues when the holidays ended.

At Glen Park we decided to replicate our normal program as much as possible rather than delivering our entire program online. During the holidays 'Learning Packs' were developed in Literacy, Maths, Humanities and LOTE.

These packs were self-contained (They included **everything** students needed) Literacy packs contained books to read and tasks to complete while and after reading. There was also handwriting, spelling, phonics and grammar activities provided. Maths packs featured measurement tasks and included all the measurement tools they would need (rulers, tape measures, egg timers, thermometers etc.) In Human-

ities we created Science packs which featured garden and kitchen chemistry tasks which were fun and engaging for children and their parents. Our LOTE teacher also provided fun Japanese activities and our MARC Van teacher ran her program via Zoom. Families could check in with me every day via a scheduled WebEx meeting using student iPads that went home.

Somehow we all managed to survive and all students returned by the 9th June. Parents picked up a box of Learning packs (3 in total went home from the 14th of April) and they were changed over when required.

It was certainly a very challenging time and hopefully we won't need to repeat it but if necessary, Glen Park is ready.

On the right is a photo of Learning packs ready to pick up for 3 students of one family.



VACANCIES FOR 2021



We are losing our older students this year so we will have vacancies for 2021 that we are keen to fill. Students of all year levels are welcome but we are always keen to have preps start with us every year. (We have already had several inquiries.)

Our Zone is quite large covering Coobin and Hillview Estates and stretching out through Pootilla, Wattle Flat towards Dean and Creswick. We do accept children sometimes from outside our zone in special circumstances.

In 2020 we had big plans (we had to cancel our excursion to see Shrek!) and we still have a lot to do. We have tidied up our grounds with work still to do on our playground and some decking and hopefully we can still have our Zoo excursion. We resumed LOTE this year and we now get MARC Van visits. In 2021 we will be starting on our new 4-year Strategic Plan and hopefully we will be back to 'normal'. Check us out online to see what we are up to. We post on Facebook, every day.

Sunny winter morning

Glen Park is taking enrolments NOW for 2021

(We would also like to hear from those of you who are considering enrolling at Glen Park in 2021-22



We expect the children who enrol at Glen Park to be enthusiastic, self-motivated learners who can take the first steps towards becoming life-long learners in an environment that rewards high expectations, imagination, creativity and hard work.

Our school values are:

- ⇒ **ACHIEVING PERSONAL BEST**
- ⇒ **EMPATHY**
- ⇒ **INDIVIDUALITY & PERSISTENCE**

SOME OF WHAT WE CAN OFFER YOUR CHILD

- A better than one to one computer and iPad ratio.
- Children are treated as individuals.
- Co-operation valued over competition

Photos on this page of children on their first week back.



- Experienced teaching staff (Special needs, LOTE and MARC van) Children are learning Japanese in LOTE this year

Children studying Japanese with Kirrily.

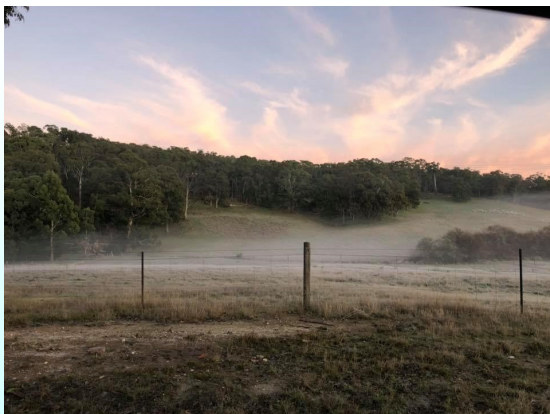


- We have an innovative literature based thinking curriculum using the F-10 Victorian Curriculum.
- Free swimming / Gym and excursion program

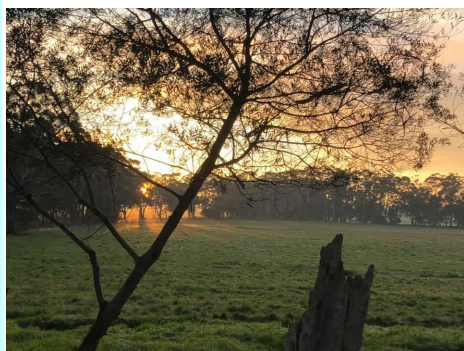
- A **library second to none** Our library includes novels, readers, big books, graphic novels, non-fiction, DVDs, software, teacher resources and a teen and parent library. We even have a popular Street Library
- Children can borrow books at any time, read as many as they like and keep them to read as long as they need too. All of our students met their Premier's Reading Challenge goals for 2020.



Children working with Kari from the MARC Van



- Children are not sent outside in the freezing cold or the heat of summer. (We will have warm, clean and inviting classrooms this winter.)
- Plenty of fresh open air and space to play and have fun.
- We have plenty of space in our clean, well-ordered, spacious classrooms.



*No 'baby sitting' in front of the DVD
No 'busy work' or constantly lining up, marching around, running errands or doubling up classes etc.*

FREE excursions (Hopefully they will resume soon)

- Our small size enables **genuine one-to-one teaching opportunities**. We have 'learning discussions' not 'chalk and talk' one size fits all lessons.
- We also have authentic student to student mentoring.
- We don't charge fees or levies, have expensive uniforms or hold endless fund-raising efforts.
- Students are not forced to 'double-up' in other classes because their teacher is away.
- We have a relaxed bully-free learning environment
- Healthy rural environment only minutes from Brown Hill, Dean and Creswick
- All student needs (even school bags) provided.

Some photos of our beautiful rural surroundings

VISIT GLEN PARK FOR A TOUR OR CHECK OUT OUR WEB SITE or FACEBOOK PAGE

SUPPORTING OUR SCHOOL (BUY LOCAL)

A HUGE thank-you to the local businesses that helped us out during our distance learning experience

A1 TREE REMOVALS

"We offer professional tree lopping and tree removal

services and care in the Ballarat region."

Ring Paul: 0447238733

DIGGA DEMOLITIONS

All types of demolition

0438661510

BALLARAT PRECISION PLUMBING

0439140677

RADMAC OFFICE CHOICE BALLARAT

Ask for Frank

53334617

COLLINS BOOKS LYDIARD ST

03 5331 7411.



KINDERGARTENS

At Glen Park we recognize how important early years education is for giving children a fantastic start to their education. Research shows that play-based learning is a powerful way to support children's development. And these benefits last into the school years and beyond.

The evidence also shows that two years are better than one when it comes to early learning.

A quality kindergarten program will have more of an impact for children who start at age 3 rather than 4. Go to the ECKA website for more details on your best local kindergarten. ECKA website: ecka.org.au

VISITING OUR SCHOOL

Remember when visiting our school (and all schools for that matter) avoid gathering as a group inside or around the school. Keep 1.5 m between yourself and other adults. Avoid handshakes and wash your hands regularly. If you have flu like symptoms....stay away!



COVID 19 INFORMATION NUMBER
1800675398

COMMUNITY NEWS

The Wattle Flat - Pootilla Landcare Group

is a committed community group aiming to enhance and protect biodiversity throughout the local area. The group formed in 2002 and now has nearly 100 individual members. The group continues to develop momentum, evolving from its early days in controlling roadside weed invasion to undertaking major projects and tasks like fencing local streams and tributaries, protection of native vegetation, propagation of seeds, wetlands establishment, and road side restoration. Refer to their web page: <https://www.landcarevic.org.au/groups/corangamite/wattle-flat-pootilla/>



The Brown Hill Bulls

The Brown Hill Bulls Cricket Club is looking for players for the 2020-21 season (Their home ground is behind the Brown Hill Pool) If you're interested (and this will be a great year to get involved) contact Phillip Knowles 0407399971.



It's also great to see lights and female friendly facilities built at Russel Square.

White Swan Reservoir

Current capacity of the white swan is 14107ML and currently it is 74% full. The Gong Gong is 37% full and Kirks 84%



Brown Hill News

For all the news about what's going on in Brown Hill (Such as the Brown Hill Market re-starting up this year in the Brown Hill Hall) refer to the excellent Brown Hill Community news Hub: <https://www.brownhill.vic.au/news/2018/04/22/brown-hill-market-coming/> for more information.



EVERY DAY IS AN OPEN DAY AT GLEN PARK!

Don't put up with second or third best, don't just hope it will 'get better next year'. We offer so much and we are just a short distance out of town. Give us a call, or visit our website or Facebook page which is updated daily to see what we do. We are always happy to welcome new families to our school. We have been doing so since 1870!



Dean Hall and Mechanics Institute Inc.

looks set for another fantastic year of special events for their community. The hall looks terrific from the outside and is a credit to all those who've worked on it. The beautifully renovated community hall not only acts as a focal point for the vibrant Dean community who use it for yoga, film nights and community get-togethers but is available for hire for weddings and art shows. Hall membership is \$20 per family per year or \$50 for 3 years. If you are interested in membership or hall hire check them out on Facebook: <https://www.facebook.com/Dean-Hall-Mechanics-Institute-165496563471217/>



The Brown Hill Public Hall is also available for hire (phone: 0455862379)

Mt Prospect District Tennis Association

Inc. is well renowned for its well groomed sixteen grass tennis courts. It's located in the picturesque town of Creswick and is surrounded by the old Creswick Botanical Gardens. Ring James Maher if you are thinking of participating 0422607224

