

Glen Park Primary School
Providing quality state education since 1872
(151 years serving our community)

EVERY
SCHOOL
EVERY
CHILD

Glen Park Primary School

Contact information:

Phone: 53345360

Web:

<http://glenparkps.vic.edu.au/> Also refer
to our FACEBOOK page.

By T. Shaw principal (1997-2023)



Glen Park Gazette

A big thank you to the staff of Glen Park Primary: Pauline Moody, Linda Duke, Ryan Uren, Kirrily Urquhart, Kari O'Gorman, and our supportive school community

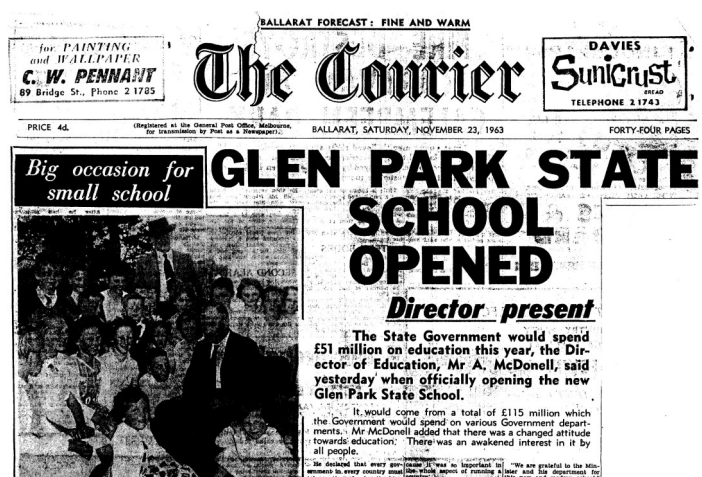
Printed by Quickprint 53-59 Scott Parade Ballarat 53388458

SCHOOL BUILDINGS AT GLEN PARK

Our first Education Department school building was built on an acre of land sold by the Kneeshaw brothers to the Colonial Government for £20. Builders Quarral and MacKenzie built the one room school building for the Glen Park community (primarily miners, timber workers and orchardists) for £83 in 1872. There were as many as 59 students here in 1878 so it must have been quite a squeeze.

By the 1960s, the building was becoming too difficult to maintain, a Public Works Department note dated April, 1962 recommends urgent work be carried out at the existing building as it could be shaken by hand and moved in a high wind. After nearly 100 years of service it was replaced in 1963 (The old building was moved off the school site and used for a while as a hall but fell into disrepair and was demolished in 1998). The new school was opened by the Director of Education Mr A. McDonnell, and MLA Tom Evans on November 22nd 1963 (refer photo). A contract was awarded to A. V. Jennings for the erection of a new school building on

the site of the old one. The total cost of the new school building was £2478. A mod-2 portable (built in 1968) was added to the site in the late 70s. A new Mod 5 double teaching space replaced the 1963 building (still in use on site) in 2011 (officially opened in 2013 by Catherine King MP) as part of the Building the Education Revolution and we just added an outdoor learning space to the 1963 room in 2022.



2023 UPDATE



Using our outdoor learning space for science experiments. (We have real scientist s (Heather from Swinburn) visiting us for 3 all-day science incursions this year)

This year has already been a very busy one with three new Preps (our biggest Prep intake in 15 years) starting this year.

This year we are painting our old building and replacing our old picnic table (hopefully we can replace our front fence this year too.) Our outdoor learning area is finished and in use. Once again we are offering LOTE (Japanese) and tutoring. We also have music therapy as part of the state government's mental health initiative. We offer one to one IT access and individual learning plans to all our students.

We are able to fully resume our excursions program with all our grade 5 students going to Somers Camp, excursions to see Mary Poppins and an excursion to Phillip Island. We also have our 10 week gymnastics and swimming program to look forward to in term 3. We will also have 2 more Scientists in Schools incursions in term 2 and 4. Another busy year at Glen Park PS.

History of Glen Park 1963-2023



PHOTO ALBUM:
School photos 1976, 1985 and 2016.
Certificate of occupancy for the 1963 building, picnic at the White Swan 1990, girls outside the 1963 building and kids trying to keep warm in the 'new' building in the 1960s. Meeting with the Minister 1999
Background photo is of the old school 1960s.after its relocation.



Form No. (M. 408)

THIS FORM TO BE COMPLETED BY HEAD TEACHER ON THE FIRST DAY OF OCCUPATION OF A NEW No. of School. SCHOOL BUILDING: 1135

Name of School: Glen Park

NOTES:—This form is to be used for official letters from all types of schools. A head teacher, when writing in reference to a teacher on his staff, should state the record number (immediately after the name) of the teacher. Communications respecting different subjects must be made on separate sheets of paper. All letters posted on the same date must be placed in the one envelope.

Name and Office of Writer: Kenneth Charles Williams (H.T.) - Record No. 60491 (H.T. Teacher)

Subject-matter of this letter: Information required by BUILDINGS BRANCH regarding occupancy of new school building.

Date and Reference Symbols of Diagram: Date: 21-1-1963 Reference Symbols: 1135, 1136, 1137, 1138, 1139, 1140, 1141, 1142, 1143, 1144, 1145, 1146, 1147, 1148, 1149, 1150, 1151, 1152, 1153, 1154, 1155, 1156, 1157, 1158, 1159, 1160, 1161, 1162, 1163, 1164, 1165, 1166, 1167, 1168, 1169, 1170, 1171, 1172, 1173, 1174, 1175, 1176, 1177, 1178, 1179, 1180, 1181, 1182, 1183, 1184, 1185, 1186, 1187, 1188, 1189, 1190, 1191, 1192, 1193, 1194, 1195, 1196, 1197, 1198, 1199, 1200, 1201, 1202, 1203, 1204, 1205, 1206, 1207, 1208, 1209, 1210, 1211, 1212, 1213, 1214, 1215, 1216, 1217, 1218, 1219, 1220, 1221, 1222, 1223, 1224, 1225, 1226, 1227, 1228, 1229, 1230, 1231, 1232, 1233, 1234, 1235, 1236, 1237, 1238, 1239, 1240, 1241, 1242, 1243, 1244, 1245, 1246, 1247, 1248, 1249, 1250, 1251, 1252, 1253, 1254, 1255, 1256, 1257, 1258, 1259, 1260, 1261, 1262, 1263, 1264, 1265, 1266, 1267, 1268, 1269, 1270, 1271, 1272, 1273, 1274, 1275, 1276, 1277, 1278, 1279, 1280, 1281, 1282, 1283, 1284, 1285, 1286, 1287, 1288, 1289, 1290, 1291, 1292, 1293, 1294, 1295, 1296, 1297, 1298, 1299, 1300, 1301, 1302, 1303, 1304, 1305, 1306, 1307, 1308, 1309, 1310, 1311, 1312, 1313, 1314, 1315, 1316, 1317, 1318, 1319, 1320, 1321, 1322, 1323, 1324, 1325, 1326, 1327, 1328, 1329, 1330, 1331, 1332, 1333, 1334, 1335, 1336, 1337, 1338, 1339, 1340, 1341, 1342, 1343, 1344, 1345, 1346, 1347, 1348, 1349, 1350, 1351, 1352, 1353, 1354, 1355, 1356, 1357, 1358, 1359, 1360, 1361, 1362, 1363, 1364, 1365, 1366, 1367, 1368, 1369, 1370, 1371, 1372, 1373, 1374, 1375, 1376, 1377, 1378, 1379, 1380, 1381, 1382, 1383, 1384, 1385, 1386, 1387, 1388, 1389, 1390, 1391, 1392, 1393, 1394, 1395, 1396, 1397, 1398, 1399, 1400, 1401, 1402, 1403, 1404, 1405, 1406, 1407, 1408, 1409, 1410, 1411, 1412, 1413, 1414, 1415, 1416, 1417, 1418, 1419, 1420, 1421, 1422, 1423, 1424, 1425, 1426, 1427, 1428, 1429, 1430, 1431, 1432, 1433, 1434, 1435, 1436, 1437, 1438, 1439, 1440, 1441, 1442, 1443, 1444, 1445, 1446, 1447, 1448, 1449, 1450, 1451, 1452, 1453, 1454, 1455, 1456, 1457, 1458, 1459, 1460, 1461, 1462, 1463, 1464, 1465, 1466, 1467, 1468, 1469, 1470, 1471, 1472, 1473, 1474, 1475, 1476, 1477, 1478, 1479, 1480, 1481, 1482, 1483, 1484, 1485, 1486, 1487, 1488, 1489, 1490, 1491, 1492, 1493, 1494, 1495, 1496, 1497, 1498, 1499, 1500, 1501, 1502, 1503, 1504, 1505, 1506, 1507, 1508, 1509, 1510, 1511, 1512, 1513, 1514, 1515, 1516, 1517, 1518, 1519, 1520, 1521, 1522, 1523, 1524, 1525, 1526, 1527, 1528, 1529, 1530, 1531, 1532, 1533, 1534, 1535, 1536, 1537, 1538, 1539, 1540, 1541, 1542, 1543, 1544, 1545, 1546, 1547, 1548, 1549, 1550, 1551, 1552, 1553, 1554, 1555, 1556, 1557, 1558, 1559, 1560, 1561, 1562, 1563, 1564, 1565, 1566, 1567, 1568, 1569, 1570, 1571, 1572, 1573, 1574, 1575, 1576, 1577, 1578, 1579, 1580, 1581, 1582, 1583, 1584, 1585, 1586, 1587, 1588, 1589, 1590, 1591, 1592, 1593, 1594, 1595, 1596, 1597, 1598, 1599, 1600, 1601, 1602, 1603, 1604, 1605, 1606, 1607, 1608, 1609, 1610, 1611, 1612, 1613, 1614, 1615, 1616, 1617, 1618, 1619, 1620, 1621, 1622, 1623, 1624, 1625, 1626, 1627, 1628, 1629, 1630, 1631, 1632, 1633, 1634, 1635, 1636, 1637, 1638, 1639, 1640, 1641, 1642, 1643, 1644, 1645, 1646, 1647, 1648, 1649, 1650, 1651, 1652, 1653, 1654, 1655, 1656, 1657, 1658, 1659, 1660, 1661, 1662, 1663, 1664, 1665, 1666, 1667, 1668, 1669, 1670, 1671, 1672, 1673, 1674, 1675, 1676, 1677, 1678, 1679, 1680, 1681, 1682, 1683, 1684, 1685, 1686, 1687, 1688, 1689, 1690, 1691, 1692, 1693, 1694, 1695, 1696, 1697, 1698, 1699, 1700, 1701, 1702, 1703, 1704, 1705, 1706, 1707, 1708, 1709, 1710, 1711, 1712, 1713, 1714, 1715, 1716, 1717, 1718, 1719, 1720, 1721, 1722, 1723, 1724, 1725, 1726, 1727, 1728, 1729, 1730, 1731, 1732, 1733, 1734, 1735, 1736, 1737, 1738, 1739, 1740, 1741, 1742, 1743, 1744, 1745, 1746, 1747, 1748, 1749, 1750, 1751, 1752, 1753, 1754, 1755, 1756, 1757, 1758, 1759, 1760, 1761, 1762, 1763, 1764, 1765, 1766, 1767, 1768, 1769, 1770, 1771, 1772, 1773, 1774, 1775, 1776, 1777, 1778, 1779, 1780, 1781, 1782, 1783, 1784, 1785, 1786, 1787, 1788, 1789, 1790, 1791, 1792, 1793, 1794, 1795, 1796, 1797, 1798, 1799, 1800, 1801, 1802, 1803, 1804, 1805, 1806, 1807, 1808, 1809, 1810, 1811, 1812, 1813, 1814, 1815, 1816, 1817, 1818, 1819, 1820, 1821, 1822, 1823, 1824, 1825, 1826, 1827, 1828, 1829, 1830, 1831, 1832, 1833, 1834, 1835, 1836, 1837, 1838, 1839, 1840, 1841, 1842, 1843, 1844, 1845, 1846, 1847, 1848, 1849, 1850, 1851, 1852, 1853, 1854, 1855, 1856, 1857, 1858, 1859, 1860, 1861, 1862, 1863, 1864, 1865, 1866, 1867, 1868, 1869, 1870, 1871, 1872, 1873, 1874, 1875, 1876, 1877, 1878, 1879, 1880, 1881, 1882, 1883, 1884, 1885, 1886, 1887, 1888, 1889, 1890, 1891, 1892, 1893, 1894, 1895, 1896, 1897, 1898, 1899, 1900, 1901, 1902, 1903, 1904, 1905, 1906, 1907, 1908, 1909, 1910, 1911, 1912, 1913, 1914, 1915, 1916, 1917, 1918, 1919, 1920, 1921, 1922, 1923, 1924, 1925, 1926, 1927, 1928, 1929, 1930, 1931, 1932, 1933, 1934, 1935, 1936, 1937, 1938, 1939, 1940, 1941, 1942, 1943, 1944, 1945, 1946, 1947, 1948, 1949, 1950, 1951, 1952, 1953, 1954, 1955, 1956, 1957, 1958, 1959, 1960, 1961, 1962, 1963, 1964, 1965, 1966, 1967, 1968, 1969, 1970, 1971, 1972, 1973, 1974, 1975, 1976, 1977, 1978, 1979, 1980, 1981, 1982, 1983, 1984, 1985, 1986, 1987, 1988, 1989, 1990, 1991, 1992, 1993, 1994, 1995, 1996, 1997, 1998, 1999, 2000, 2001, 2002, 2003, 2004, 2005, 2006, 2007, 2008, 2009, 2010, 2011, 2012, 2013, 2014, 2015, 2016, 2017, 2018, 2019, 2020, 2021, 2022, 2023, 2024, 2025, 2026, 2027, 2028, 2029, 2030, 2031, 2032, 2033, 2034, 2035, 2036, 2037, 2038, 2039, 2040, 2041, 2042, 2043, 2044, 2045, 2046, 2047, 2048, 2049, 2050, 2051, 2052, 2053, 2054, 2055, 2056, 2057, 2058, 2059, 2060, 2061, 2062, 2063, 2064, 2065, 2066, 2067, 2068, 2069, 2070, 2071, 2072, 2073, 2074, 2075, 2076, 2077, 2078, 2079, 2080, 2081, 2082, 2083, 2084, 2085, 2086, 2087, 2088, 2089, 2090, 2091, 2092, 2093, 2094, 2095, 2096, 2097, 2098, 2099, 2100, 2101, 2102, 2103, 2104, 2105, 2106, 2107, 2108, 2109, 2110, 2111, 2112, 2113, 2114, 2115, 2116, 2117, 2118, 2119, 2120, 2121, 2122, 2123, 2124, 2125, 2126, 2127, 2128, 2129, 2130, 2131, 2132, 2133, 2134, 2135, 2136, 2137, 2138, 2139, 2140, 2141, 2142, 2143, 2144, 2145, 2146, 2147, 2148, 2149, 2150, 2151, 2152, 2153, 2154, 2155, 2156, 2157, 2158, 2159, 2160, 2161, 2162, 2163, 2164, 2165, 2166, 2167, 2168, 2169, 2170, 2171, 2172, 2173, 2174, 2175, 2176, 2177, 2178, 2179, 2180, 2181, 2182, 2183, 2184, 2185, 2186, 2187, 2188, 2189, 2190, 2191, 2192, 2193, 2194, 2195, 2196, 2197, 2198, 2199, 2200, 2201, 2202, 2203, 2204, 2205, 2206, 2207, 2208, 2209, 2210, 2211, 2212, 2213, 2214, 2215, 2216, 2217, 2218, 2219, 2220, 2221, 2222, 2223, 2224, 2225, 2226, 2227, 2228, 2229, 2230, 2231, 2232, 2233, 2234, 2235, 2236, 2237, 2238, 2239, 2240, 2241, 2242, 2243, 2244, 2245, 2246, 2247, 2248, 2249, 2250, 2251, 2252, 2253, 2254, 2255, 2256, 2257, 2258, 2259, 2260, 2261, 2262, 2263, 2264, 2265, 2266, 2267, 2268, 2269, 2270, 2271, 2272, 2273, 2274, 2275, 2276, 2277, 2278, 2279, 2280, 2281, 2282, 2283, 2284, 2285, 2286, 2287, 2288, 2289, 2290, 2291, 2292, 2293, 2294, 2295, 2296, 2297, 2298, 2299, 2300, 2301, 2302, 2303, 2304, 2305, 2306, 2307, 2308, 2309, 2310, 2311, 2312, 2313, 2314, 2315, 2316, 2317, 2318, 2319, 2320, 2321, 2322, 2323, 2324, 2325, 2326, 2327, 2328, 2329, 2330, 2331, 2332, 2333, 2334, 2335, 2336, 2337, 2338, 2339, 2340, 2341, 2342, 2343, 2344, 2345, 2346, 2347, 2348, 2349, 2350, 2351, 2352, 2353, 2354, 2355, 2356, 2357, 2358, 2359, 2360, 2361, 2362, 2363, 2364, 2365, 2366, 2367, 2368, 2369, 2370, 2371, 2372, 2373, 2374, 2375, 2376, 2377, 2378, 2379, 2380, 2381, 2382, 2383, 2384, 2385, 2386, 2387, 2388, 2389, 2390, 2391, 2392, 2393, 2394, 2395, 2396, 2397, 2398, 2399, 2400, 2401, 2402, 2403, 2404, 2405, 2406, 2407, 2408, 2409, 2410, 2411, 2412, 2413, 2414, 2415, 2416, 2417, 2418, 2419, 2420, 2421, 2422, 2423, 2424, 2425, 2426, 2427, 2428, 2429, 2430, 2431, 2432, 2433, 2434, 2435, 2436, 2437, 2438, 2439, 2440, 2441, 2442, 2443, 2444, 2445, 2446, 2447, 2448, 2449, 2450, 2451, 2452, 2453, 2454, 2455, 2456, 2457, 2458, 2459, 2460, 2461, 2462, 2463, 2464, 2465, 2466, 2467, 2468, 2469, 2470, 2471, 2472, 2473, 2474, 2475, 2476, 2477, 2478, 2479, 2480, 2481, 2482, 2483, 2484, 2485, 2486, 2487, 2488, 2489, 2490, 2491, 2492, 2493, 2494, 2495, 2496, 2497, 2498, 2499, 2500, 2501, 2502, 2503, 2504, 2505, 2506, 2507, 2508, 2509, 2510, 2511, 2512, 2513, 2514, 2515, 2516, 2517, 2518, 2519, 2520, 2521, 2522, 2523, 2524, 2525, 2526, 2527, 2528, 2529, 2530, 2531, 2532, 2533, 2534, 2535, 2536, 2537, 2538, 2539, 2540, 2541, 2542, 2543, 2544, 2545, 2546, 2547, 2548, 2549, 2550, 2551, 2552, 2553, 2554, 2555, 2556, 2557, 2558, 2559, 2560, 2561, 2562, 2563, 2564, 2565, 2566, 2567, 2568, 2569, 2570, 2571, 2572, 2573, 2574, 2575, 2576, 2577, 2578, 2579, 2580, 2581, 2582, 2583, 2584, 2585, 2586, 2587, 2588, 2589, 2590, 2591, 2592, 2593, 2594, 2595, 2596, 2597, 2598, 2599, 2600, 2601, 2602, 2603, 2604, 2605, 2606, 2607, 2608, 2609, 2610, 2611, 2612, 2613, 2614, 2615, 2616, 2617, 2618, 2619, 2620, 2621, 2622, 2623, 2624, 2625, 2626, 2627, 2628, 2629, 2630, 2631, 2632, 2633, 2634, 2635, 2636, 2637, 2638, 2639, 2640, 2641, 2642, 2643, 2644, 2645, 2646, 2647, 2648, 2649, 2650, 2651, 2652, 2653, 2654, 2655, 2656, 2657, 2658, 2659, 2660, 2661, 2662, 2663, 2664, 2665, 2666, 2667, 2668, 2669, 2670, 2671, 2672, 2673, 2674, 2675, 2676, 2677, 2678, 2679, 2680, 2681, 2682, 2683, 2684, 2685, 2686, 2687, 2688, 2689, 2690, 2691, 2692, 2693, 2694, 2695, 2696, 2697, 2698, 2699, 2700, 2701, 2702, 2703, 2704, 2705, 2706, 2707, 2708, 2709, 2710, 2711, 2712, 2713, 2714, 2715, 2716, 2717, 2718, 2719, 2720, 2721, 2722, 2723, 2724, 2725, 2726, 2727, 2728, 2729, 2730, 2731, 2732, 2733, 2734, 2735, 2736, 2737, 2738, 2739, 2740, 2741, 2742, 2743, 2744, 2745, 2746, 2747, 2748, 2749, 2750, 2751, 2752, 2753, 2754, 2755, 2756, 2757, 2758, 2759, 2760, 2761, 2762, 2763, 2764, 2765, 2766, 2767, 2768, 2769, 2770, 2771, 2772, 2773, 2774, 2775, 2776, 2777, 2778, 2779, 2780, 2781, 2782, 2783, 2784, 2785, 2786, 2787, 2788, 2789, 2790, 2791, 2792, 2793, 2794, 2795, 2796, 2797, 2798, 2799, 2800, 2801, 2802, 2803, 2804, 2805, 2806, 2807, 2808, 2809, 2810, 2811, 2812, 2813, 2814, 2815, 2816, 2817, 2818, 2819, 2820, 2821, 2822, 2823, 2824, 2825, 2826, 2827, 2828, 2829, 2830, 2831, 2832, 2833, 2834, 2835, 2836, 2837, 2838, 2839, 2840, 2841, 2842, 2843, 2844, 2845, 2846, 2847, 2848, 2849, 2850, 2851, 2852, 2853, 2854, 2855, 2856, 2857, 2858, 2859, 2860, 2861, 2862, 2863, 2864, 2865, 2866, 2867, 2868, 2869, 2870, 2871, 2872, 2873, 2874, 2875, 2876, 2877, 2878, 2879, 2880, 2881, 2882, 2883, 2884, 2885, 2886, 2887, 2888, 2889, 2890, 2891, 2892, 2893, 2894, 2895, 2896, 2897, 2898, 2899, 2900, 2901, 2902, 2903, 2904, 2905, 2906, 2907, 2908, 2909, 2910, 2911, 2912, 2913, 2914, 2915, 2916, 2917, 2918, 2919, 2920, 2921, 2922, 2923, 2924, 2925, 2926, 2927, 2928, 2929, 2930, 2931, 2932, 2933, 2934, 2935, 2936, 2937, 2938, 2939, 2940, 2941, 2942, 2943, 2944, 2945, 2946, 2947, 2948, 2949, 2950, 2951, 2952, 2953, 2954, 2955, 2956, 2957, 2958, 2959, 2960, 2961, 2962, 2963, 2964, 2965, 2966, 2967, 2968, 2969, 2970, 2971, 2972, 2973, 2974, 2975, 2976, 2977, 2978, 2979, 2980, 2981, 2982, 2983, 2984, 2985, 2986, 2987, 2988, 2989, 2990, 2991, 2992, 2993, 2994, 2995, 2996, 2997, 2998, 2999, 3000, 3001, 3002, 3003, 3004, 3005, 3006, 3007, 3008, 3

CENTENARY CELEBRATIONS

In 1963, Glen Park PS had a major facelift with the old school building replaced with a new school building (refer page 1).

To mark the centenary of the school, a committee was formed in 1971 to plan a "Back To School" celebration. The Head Teacher at the time, Mr. N. Hunter was president, Ron Quick treasurer and Wally Coffield secretary of the committee. Other members recorded in the minutes as being part of the committee were Mrs. Mathews, Mrs. Maddern, Mrs. Rowe, Mrs. Ralston, Mrs. Lithgo, Ron Ralston, W. Rumler and Mrs. Rumler.

The 23rd of October 1971 was chosen as the date for the centenary as this was almost exactly 100 years to the day of the first meeting which made the decision to form the Bungaree Springs School. Official guests, Mr L Yandell District, Inspector of Schools, The President of the Shire of Bungaree, Mr Stan Slater, and Mr. Tom Evans, MLA for Ballarat North were invited. Mr. Tom Evans unveiled the plaque on the centenary gates. (still there) .Although the weather on the day was not good, a large crowd was in attendance. A roll call of past pupils was held and the oldest past pupil in attendance, Mrs. Margaret Skinner (nee Coutts) was presented with a tin of biscuits.

I am reliably told that students still sometimes rode to school on horses and that there was a 'stable' available for them to use. Fencing was improved and in the late 70s a mod 2 (small) relocatable classroom was added with covered walkways. Large cypress trees around the school were removed in the 80s. Glen Park students were renowned for their sporting prowess at this time, often starring at the Dean/Newlyn School Sports throughout the 60s-80s. The school population increased and in 1990 we had 24 students. At this time our parents club was very active raising a lot of money for the school.

**CUTS**

In the early 90s, the Kennett Government made severe cuts to state education funding which saw thousands of teachers lost to the system and over 300 schools were closed (most of them in rural Victoria).

Glen Park was spared closure (there was a mandatory policy that said if your school fell under 12 enrolments you would be permanently closed within weeks) .These were difficult years in small rural schools and it's taken many years for us to bounce back.

Bush fires in 1997 caused extensive local damage and destroyed the local fire truck (the school was very close to destruction itself). The locals rallied around to raise money to replace the truck and repair fire damage. The school stopped fund raising so that money in the community could be dedicated to that. Unfortunately, the fire and government policy led to the closure of the White Swan Reservoir to the public.

The Brack's Government in 2000 scrapped the mandatory school closure policy and instead allowed schools to determine their own fate. As a consequence, Glen Park has been able to stay open even with a fluctuating enrolment.

FUTURE

The Federal Government invested billions of dollars into education during the GFC and we benefitted by having a \$300 000 Mod 5 built for our school giving us state of the art education facilities, in the same way our 1963 cohort of students benefitted from their new building. Since the late 1990s we have had a policy of investing in our students and can now boast modern ICT and a library and teaching resources second to none. We have been at the cutting edge of education with early adoption of thinking curriculum, one-to one ICT devises, personalised learning plans and integrated learning.

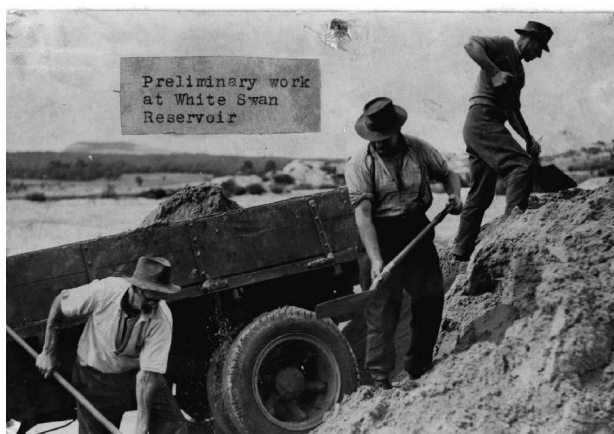
Glen Park weathered the COVID Pandemic and has a bright future providing high quality free and secular state education to its local community as it has done for the last 150 years.

THE WHITE SWAN RESERVOIR

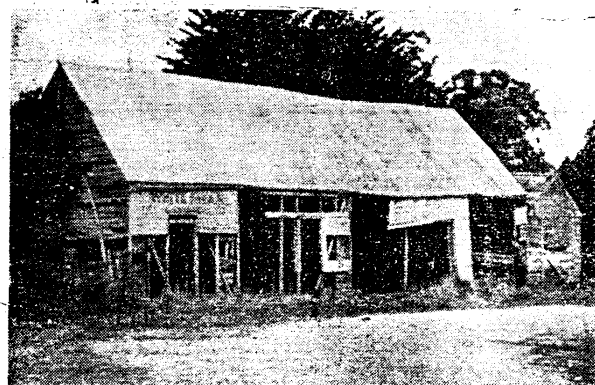
The total water storage controlled by the Ballarat Water Commission became so seriously depleted at the beginning of the year 1939 that it was necessary for the Commission to ration supplies to the population of approximately 45,000 persons residing in the City Of Ballarat and District. This prompted the Commission to investigate the possibilities of increasing the water storage capacity. Consequently, during the early stages of the recent world conflict, the Commissioner (the late Mr. G.M. Searle) examined a number of additional reservoir, and he finally recommended that the White Swan site was worthy of investigation.

Thus, following an examination of the foundation and the availability of materials at the White Swan site, the Commission's Engineer-in-Chief in a report dated 24/1/1946, recommended the construction of an embankment of maximum height 130 feet and containing approximately 1,100,000 cubic yards of rolled earth fill, at an estimated cost of £420,000, which figure includes the construction of subsidiary works such as a concrete valve tower and outlet conduit, concrete cut off walls etc.

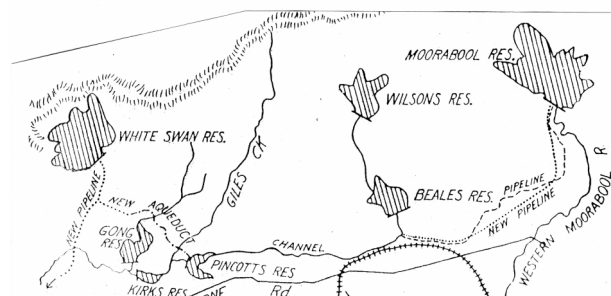
As the reservoir has practically no catchment of its own it will be necessary to conduct surplus waters from the Commission's existing catchment areas which total 21,422 acres. Consequently it was recommended that approximately five miles of 42 inch diameter pipe line be constructed from the Moorabool Reservoir to junction with the existing open channel near Beale's Reservoir, the open channel from Beale's to Pincott's Reservoir be enlarged and cement lined and a combination of concrete lined aqueduct and 42 inch diameter Mild Steel pipe line be constructed from Pincott's Reservoir for a distance of approximately 3 ¼ miles to the White Swan Reservoir. The estimated cost of these channels and pipe lines, together with the cost of laxing approximately two miles of 27 inch diameter Mild Steel pipe line from the new Reservoir to junction with the Commission's existing four 18 inch diameter main near the valve house on the Daylesford Road is £147,000; thus making the total estimated cost of the project being £567,000.



Despite that high figure, this Commission, being conscious of the necessity of providing an adequate water supply in order to ensure the progress of Ballarat and district, unanimously adopted



The now submerged White Swan pub. Photo taken in 1947.



A general plan of the White Swan project which shows the linking with the other reservoirs via pipes and channels.

the Engineer's report and forwarded a copy to the State Rivers and Water Supply Commission for approval. That authority, after a thorough examination of the report and also of the proposed site, on 03/06/1946 generally approved of the project. Since that date, soil testing and exploratory work has proceeded, and following a decision by this Commission to carry out the work by day labour methods, a considerable amount of earth-moving equipment has been purchased, mainly from the Commonwealth Government through the agency of the State Plant Allocation Committee.

This plant was purchased at a very reasonable price, and to date it has been utilised in the construction of access roads, the clearing and grubbing of the area to be inundated, the stripping of the over burden on the Rich Hill side of the valley in which vicinity numerous mining drives and shafts were excavated during the gold mining days. The plant has also proved economical in the stripping of the foundations of the two embankments, the preliminary development of borrow pit areas and in the excavation of the trench for the cut off wall under the smaller embankment. The White Swan was officially opened on August 1st., 1952. Water is distributed by gravitation through pipes from the White Swan, Gong Gong, Kirks and Pincotts to the Brown Hill pump house where pressures are controlled and water is distributed to the district. Another supply pipe from the White Swan supplies the Wendouree area.

1947 Report to The Ballarat Water Commissioners